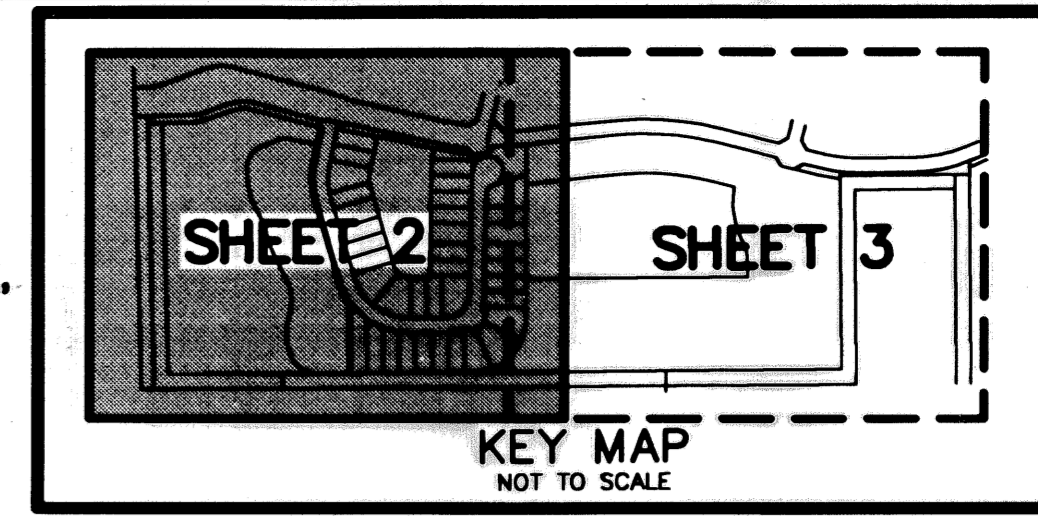


OAKS AT BOCA RATON PLAT THREE

A PLANNED UNIT DEVELOPMENT BEING A PART OF RAINBOW PUD
 BEING A REPLAT OF TRACTS F AND L-9 AND A PORTION OF TRACT C, "OAKS AT BOCA RATON PLAT ONE", AS RECORDED IN PLAT BOOK 95, PAGES 16 THROUGH 22,
 AND TRACTS A AND B AND A PORTION OF TRACT R, "OAKS AT BOCA RATON PLAT TWO", AS RECORDED IN PLAT BOOK 98, PAGES 196 THROUGH 198
 BOTH OF THE PUBLIC RECORDS OF PALM BEACH COUNTY, FLORIDA,
 LYING IN SECTION 31, TOWNSHIP 46 SOUTH, RANGE 42 EAST, PALM BEACH COUNTY, FLORIDA

THIS INSTRUMENT PREPARED BY
 DAVID P. LINDLEY

OF
CAULFIELD and WHEELER, INC.
 SURVEYORS - ENGINEERS - PLANNERS
 7301-A WEST PALMETTO PARK ROAD, SUITE 100A
 BOCA RATON, FLORIDA 33433 - (561)392-1991
 SEPTEMBER - 2002

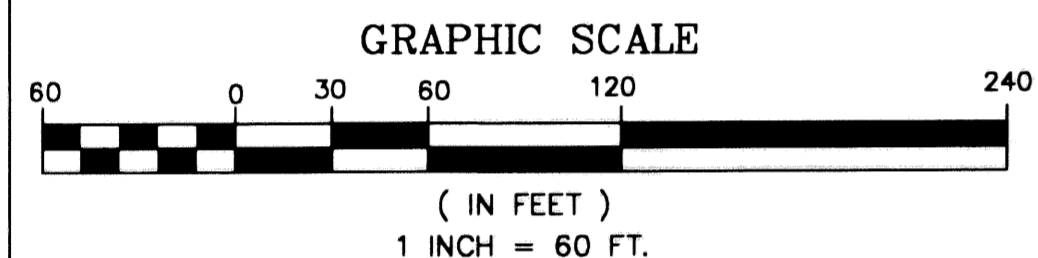


STATE OF FLORIDA
 COUNTY OF PALM BEACH
 THIS PLAT WAS FILED FOR
 RECORD AT _____ M.
 THIS _____ DAY OF _____
 A.D. 2003 AND DULY RECORDED
 IN PLAT BOOK _____ ON
 PAGES _____ AND _____
 DOROTHY H. WILKEN
 CLERK CIRCUIT COURT

BY: _____
 DEPUTY CLERK

NOTES COORDINATES, BEARINGS AND DISTANCES

COORDINATES SHOWN ARE GRID
 DATUM = NAD 83 1990 ADJUSTMENT
 ZONE = FLORIDA EAST
 LINEAR UNIT = US SURVEY FEET
 COORDINATE SYSTEM 1983 STATE PLANE
 TRANSVERSE MERCATOR PROJECTION
 ALL DISTANCES ARE GROUND
 SCALE FACTOR = 1.00002099
 GROUND DISTANCE X SCALE FACTOR = GRID DISTANCE
 BEARINGS AS SHOWN HEREON ARE GRID DATUM, NAD 83 1990
 ADJUSTMENT, FLORIDA EAST ZONE.



CURVE TABLE

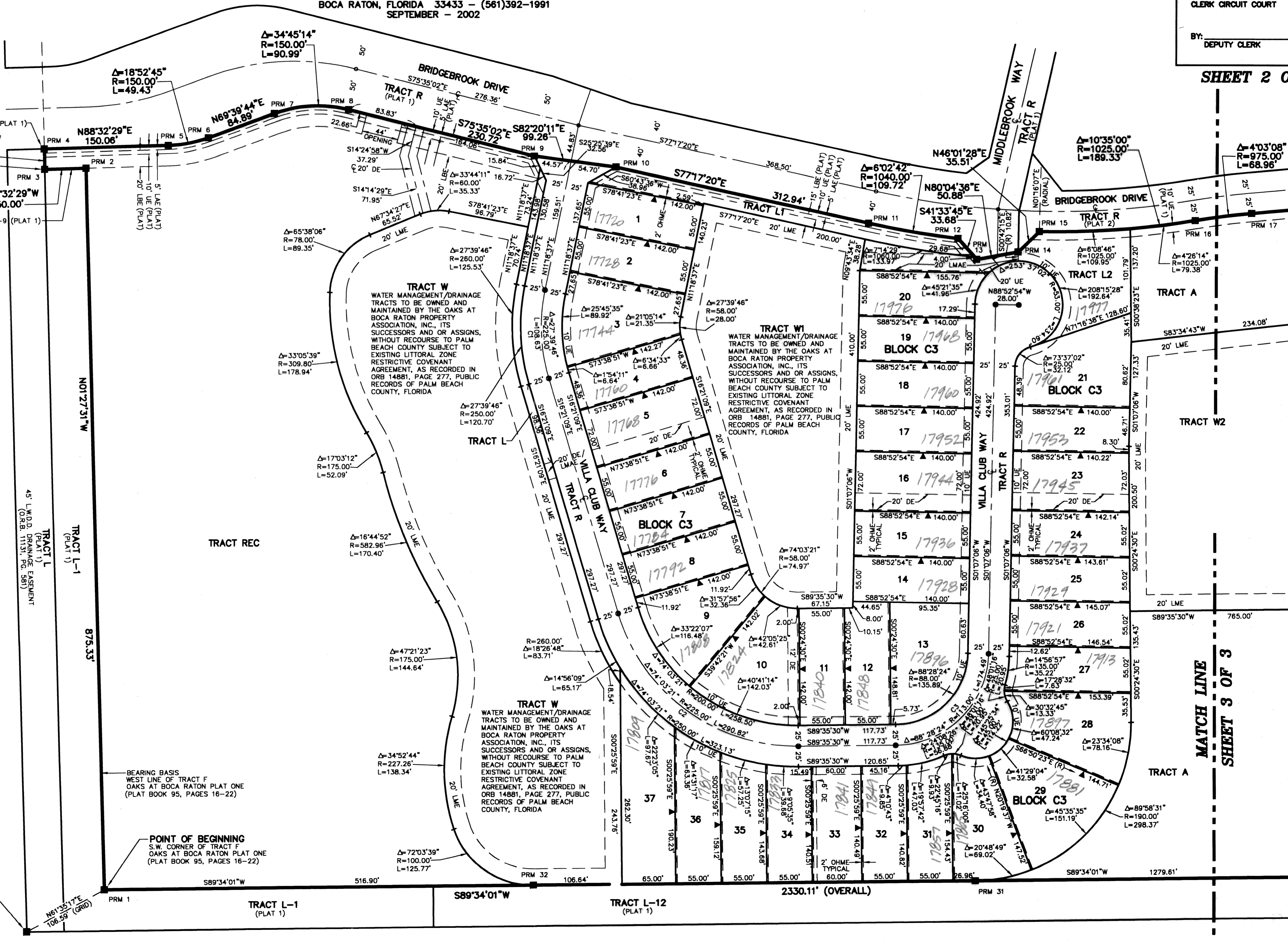
CURVE NO.	CHORD BEARING	CHORD DISTANCE
C1	S02°31'13"E	107.56'
C2	S53°22'50"E	270.99'
C3	N45°21'18"E	157.66'

COORDINATE TABLE

P.R.M.#	NORTHING	EASTING
1	755845.42	916980.82
2	756720.49	916958.54
3	756719.22	916908.55
4	756744.21	916907.91
5	756748.03	917057.94
6	756757.33	917106.26
7	756786.83	917185.85
8	756791.46	917275.33
9	756734.01	917498.81
10	756720.78	917597.19
11	756651.92	917902.46
12	756633.46	918010.58
13	756608.26	918032.92
14	756617.03	918083.04
15	756641.68	918108.60
16	756654.95	918297.20
17	756663.70	918365.58
18	756679.81	918540.57
19	756655.67	918864.19
20	756602.26	919081.66
21	756572.02	919099.97
22	756560.09	919148.53
23	756578.41	919178.77
24	756563.98	919237.53
25	756548.85	919366.84
26	756550.35	919558.86
27	756588.16	919750.46
28	756541.38	919750.81
29	756538.02	919305.82
30	755863.03	919310.92
31	755853.36	918031.32
32	755849.33	917497.72

SUBDIVISION Oaks At Boca Raton Plat 3
 BOOK 99
 FLOOD ZONE B
 QUAD # 52
 SE
 TAZ 880
 PUD NAME RAINBOW

S.W. CORNER OF TRACT L
 OAKS AT BOCA RATON PLAT ONE
 (PLAT BOOK 95, PAGES 16-22)
 N=757594.71
 E=916887.07



MATCH LINE
 SHEET 3 OF 3